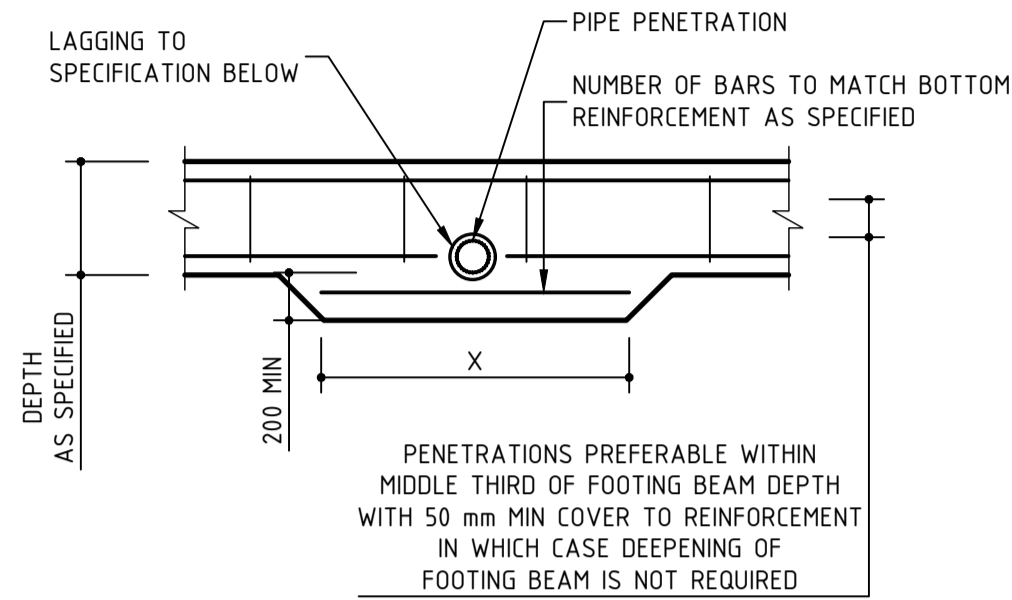
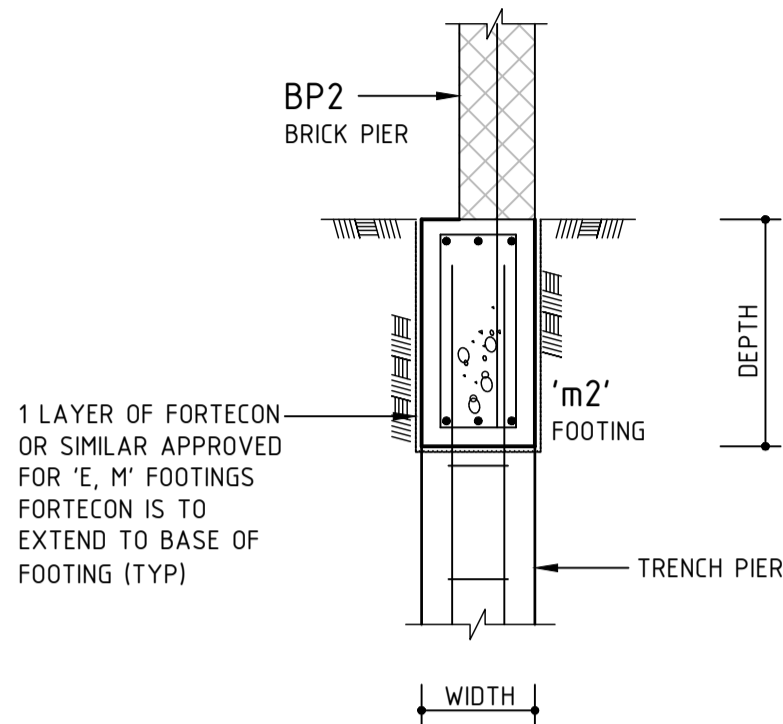


TYPICAL FOOTING DETAIL
NTS

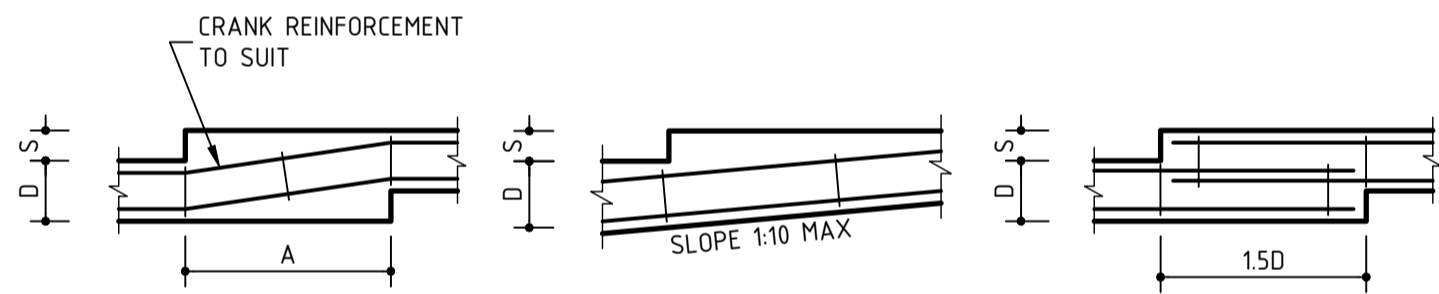


LAP BAR IN DEEPEENED FOOTING	
LAP BAR LENGTH X, mm	MAIN (& LAP) BAR REINF SIZE
1200	N12
1700	N16
2200	N20
3100	N24

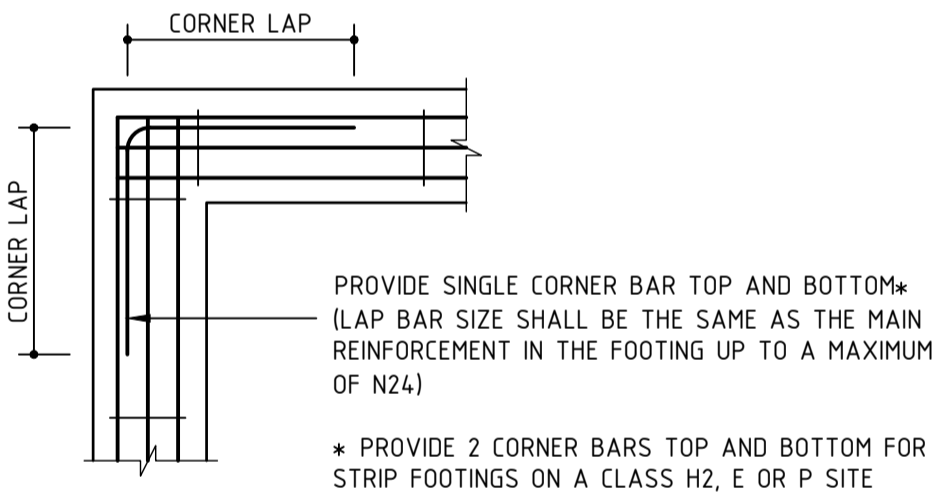
SERVICE PIPE LAGGING	
SITE SOIL CLASSIFICATION	CLOSED CELL POLYETHYLENE LAGGING THICKNESS, mm
S	20*
M, H1	20
H2, E, P	40
* NEED NOT BE CLOSED CELL	

FOOTING SERVICE PENETRATION DETAIL
NTS

STEP LENGTH	
MAX STEP HEIGHT S, mm	DIMENSION A, mm
100 (1 COURSE)	600
200 (2 COURSES)	1200

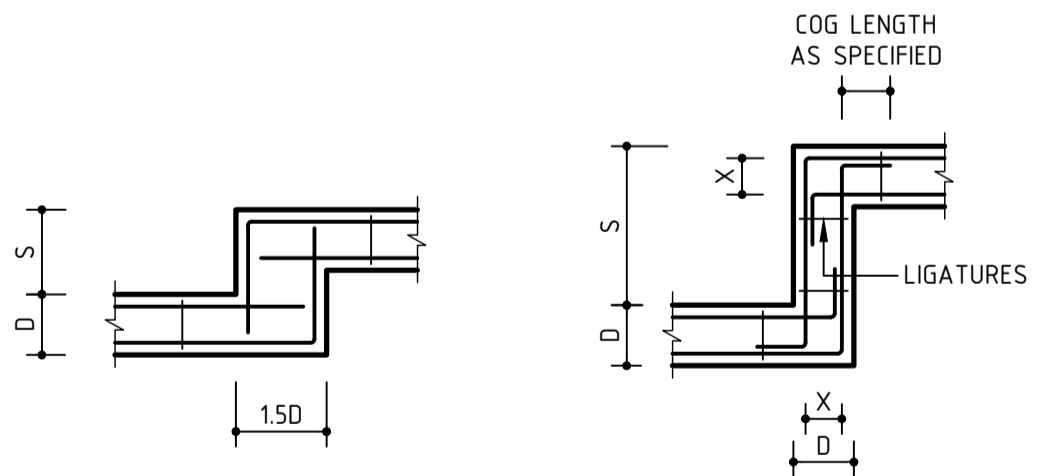


OPTION 1
OPTION 2
OPTION 3
STEP 'S' FOR 2 MASONRY COURSES (200 mm OR LESS)



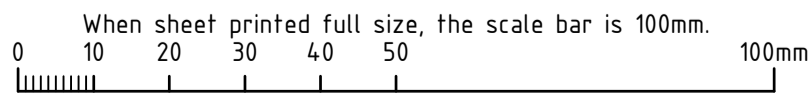
CORNER LAP LENGTHS	
N12, 16, 20	- 500mm MIN.
N24, 28, 32	- 1000mm MIN.

ADDITIONAL CORNER REINFORCEMENT
NTS



STEP 'S' GREATER THAN 200, AND LESS THAN '2D'
STEP 'S' GREATER THAN '2D' (DROP PIER)
COGS MAY BE OMITTED IF 'X' IS GREATER THAN OR EQUAL TO SPECIFIED COG LENGTH

TYPICAL FOOTING STEP DETAILS
NTS



B	ADDED BRICK LINTELS	JVI	KWA	23.07.19
A	BUILDING APPROVAL ISSUE	JVI	KWA	21.05.19
No	REVISION	DRAWN	CHE'KD	DATE

PROJECT
PROPOSED TOWNHOUSE
AT: 90 JOHNS ROAD
PROSPECT
FOR: CITIFY & BFC Pty Ltd

DRAWING TITLE
FOOTING DETAILS

Civil
Environmental
Mechanical
Fire
Lifts

Structural
Geotechnical
Electrical
Hydraulics
Green ESD

Level 6, 100 Pirie Street,
Adelaide SA 5000
Telephone 08 8238 4100
Facsimile 08 8410 1405
Berri Office: 25 Vaughan Terrace,
Berri SA 5343

SCALES		COPYRIGHT RESERVED	
AS SHOWN	MY	DRAWING No. 1806063-S101/B	
DATE	MAR '19		
ENGINEER	FK		
CHECKED	FK		